

PRIVATE LIVES AND PUBLIC WORKS

150 Years of Civil Engineering in America

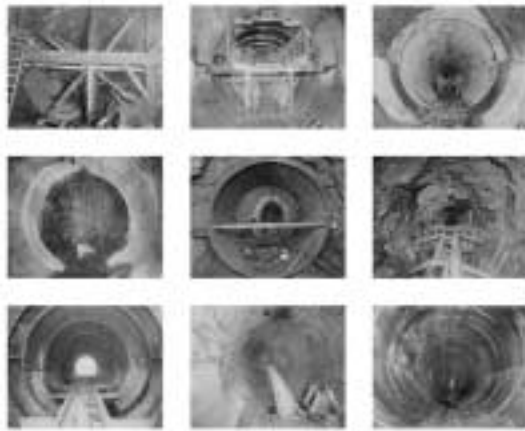
I ON INFRASTRUCTURE *A Companion Exhibit*

From the perspectives of artists, authors, philosophers and historians, *I on Infrastructure* examines ways the non-technical world reflects on the engineering profession and its structures.

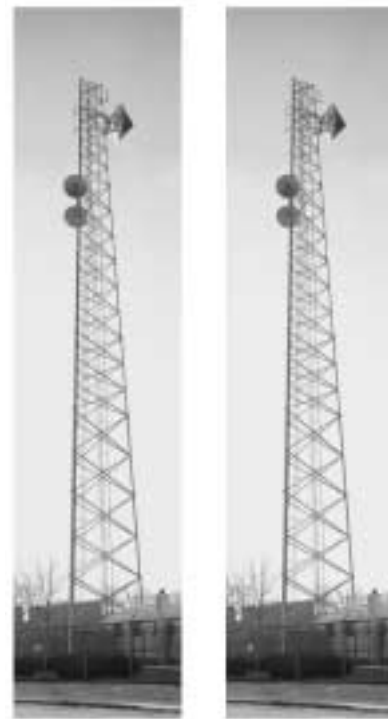
I on Infrastructure, a companion exhibit to *Me, Myself and Infrastructure: Private Lives and Public Works in America*, opens May 22 at the New York Public Library's Science, Industry and Business Library.

I on Infrastructure offers an in-depth look at the aesthetics of civil engineering artwork and artifacts. *I on Infrastructure* engages visitors by concentrating on the visual rather than the technical aspects of civil engineering. People mostly depend on what they see to establish their perceptions of infrastructure and civil engineering.

The exhibit features works inspired by well-known artists and art movements, and each component of *I on Infrastructure* incorporates a fundamental a civil engineering structure, product or material – such as a highway exit sign and PVC pipe. The goal of this art-based exhibit is to prompt the viewer to reflect on their views of how infrastructure affects the quality of their life and the world around them.



Catskill Water Tunnels (9 framed photographs) New York City, Water Supply Board, Photographs of the Catskill Water Supply System from the collection of the New York Public Library's Science, Industry and Business Library



Cell phone towers (2 hanging banners on fabric) Photographs by David Arcos

I ON INFRASTRUCTURE

May 22 – December 14, 2002

The New York Public Library

Science, Industry and Business Library

188 Madison Avenue, New York, N.Y.

For more information, contact Norida Torriente at 202-326-5129 or ntorriente@asce.org.

I ON INFRASTRUCTURE was designed by Chicken&Egg Public Projects, Inc., and Boym Partners, Inc. as part of the 150th anniversary celebration of the American Society of Civil Engineers. Founded in 1852, ASCE represents more than 125,000 civil engineers worldwide and is America's oldest national engineering society. More details on *I on Infrastructure* and ASCE's 150th anniversary can be found at www.asce.org/150

1015 15th Street, NW, Suite 600 Washington, DC 20005

tel: 202.789.2200 or 800.548.2723 ext 5144 fax: 202.289.6797 www.asce.org/150

American Society of Civil Engineers



PRIVATE LIVES AND PUBLIC WORKS

150 Years of Civil Engineering in America

ASK THE INFRASTRUCTURE *Traveling Exhibit*



EXHIBIT SCHEDULE

Ask the Infrastructure is a companion traveling exhibit to *Me, Myself and Infrastructure* that provides vignettes on the six driving messages behind ASCE's yearlong outreach:

Who's Responsible?

Is it Safe?

Is it Available?

How Much Does it Cost?

How Big is It?

How Long Will it Last?

These six questions are presented in three-dimensional columns that encourage viewers to revisit the meaning of infrastructure. Narratives, drawn from all parts of the country, explore these questions and examine the impact of civil engineers on daily life.

ASK THE INFRASTRUCTURE

To find out where the exhibit is on display in your area, please contact Lindsay Keller at 202-789-2200 or prwash@asce.org. Media inquiries: Norida Torriente at 202-326-5129 or ntorriente@asce.org

Ask the Infrastructure
on display at the
Library of Congress.



| | |
|---------------------------|---------------------|
| June 20-24 | Madison, WI |
| June 27-30 | Las Vegas, NV |
| June 30-July 3 | Orlando, FL |
| July 2-11 | Reston, VA |
| July 2-August 12 | Dallas, TX |
| July 11-13 | Orlando, FL |
| August 15-22 | Sacramento, CA |
| August 19-23 | San Diego, CA |
| August 25-October 5 | San Francisco, CA |
| September 8-9 | Atlanta, GA |
| September 12-13 | Lansing, MI |
| September 22-25 | Kansas City, MO |
| September 27-October 3 | San Luis Obispo, CA |
| October 4-16 | Spokane, WA |
| October 9-12 | Detroit, MI |
| October 10-30 | Raleigh, NC |
| October 10-13 | Denver, CO |
| November 3-6 | Washington, DC |
| November 6-15 | Reston, VA |
| November 24-December 4 | San Francisco, CA |
| December 4-6 | Las Vegas, NV |
| December 5 | Augusta, ME |
| December 6-10 | San Francisco, CA |
| February 24-March 1, 2003 | Phoenix, AZ |

ASK THE INFRASTRUCTURE was designed by Chicken&Egg Public Projects, Inc., and Boym Partners, Inc. as part of the 150th anniversary celebration of the American Society of Civil Engineers. Founded in 1852, ASCE represents more than 125,000 civil engineers worldwide and is America's oldest national engineering society. More details on *Ask the Infrastructure* and ASCE's 150th anniversary can be found at www.asce.org/150

1015 15th Street, NW, Suite 600 Washington, DC 20005

tel: 202.789.2200 or 800.548.2723 ext 5144 fax: 202.289.6797 www.asce.org/150

American Society of Civil Engineers

